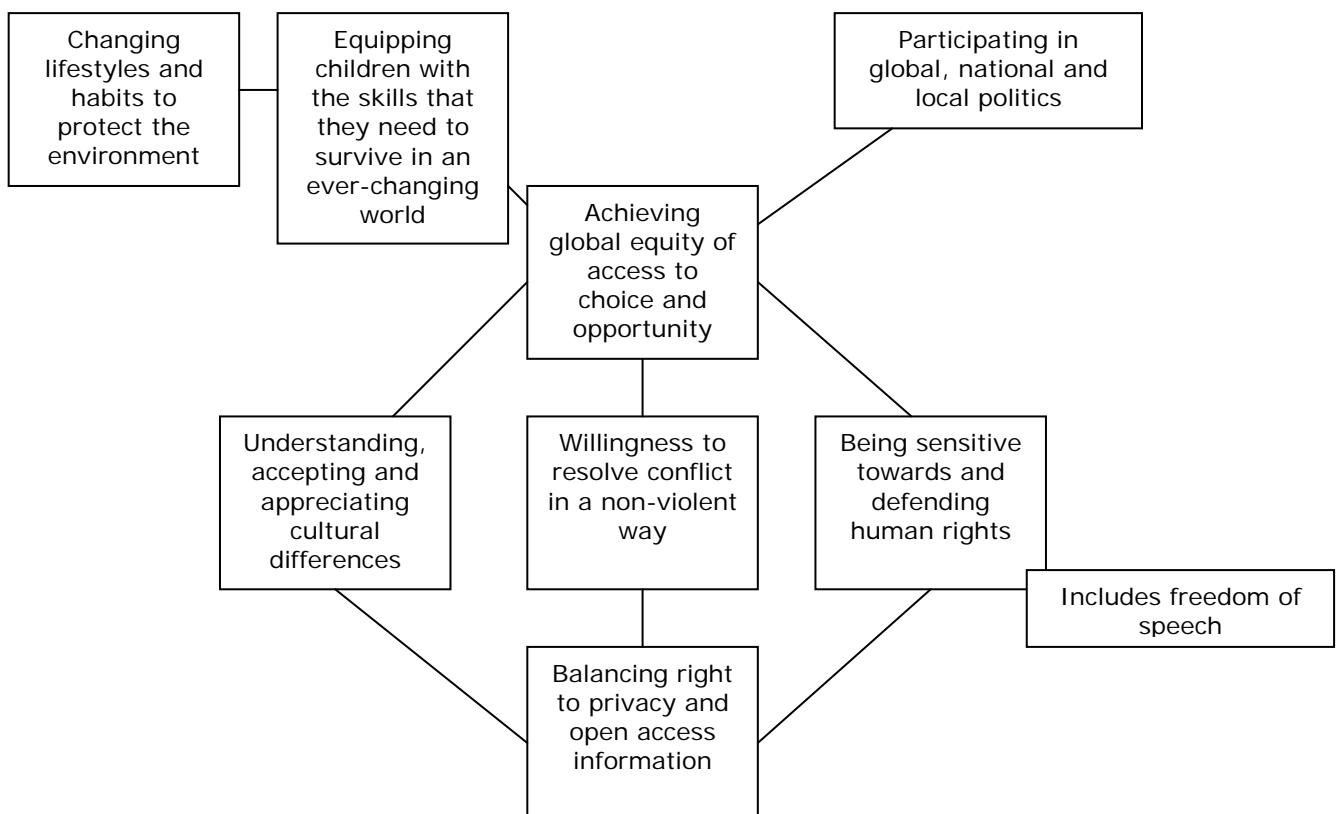


Chichester Nursery School and Children's Centre Creative Day Group Work

Task 1 – Global Perspectives

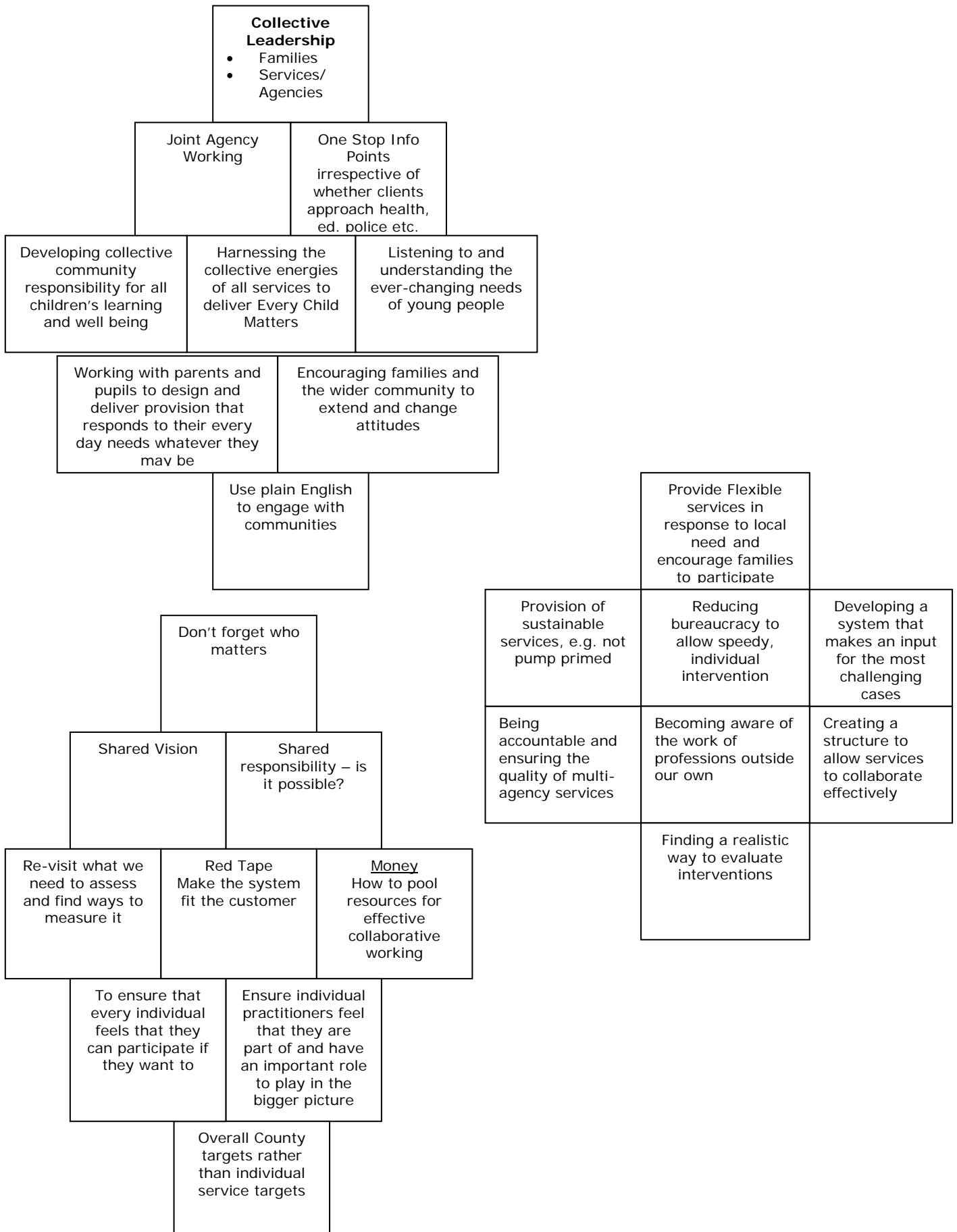
Groups were asked to think about what motivates them on a global scale and what they feel are important global issues.

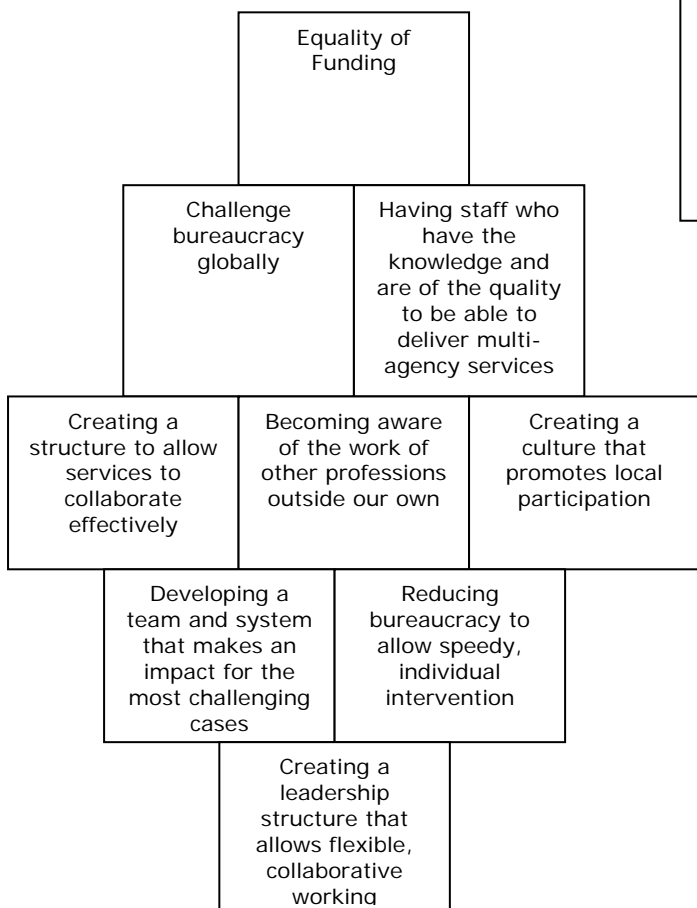
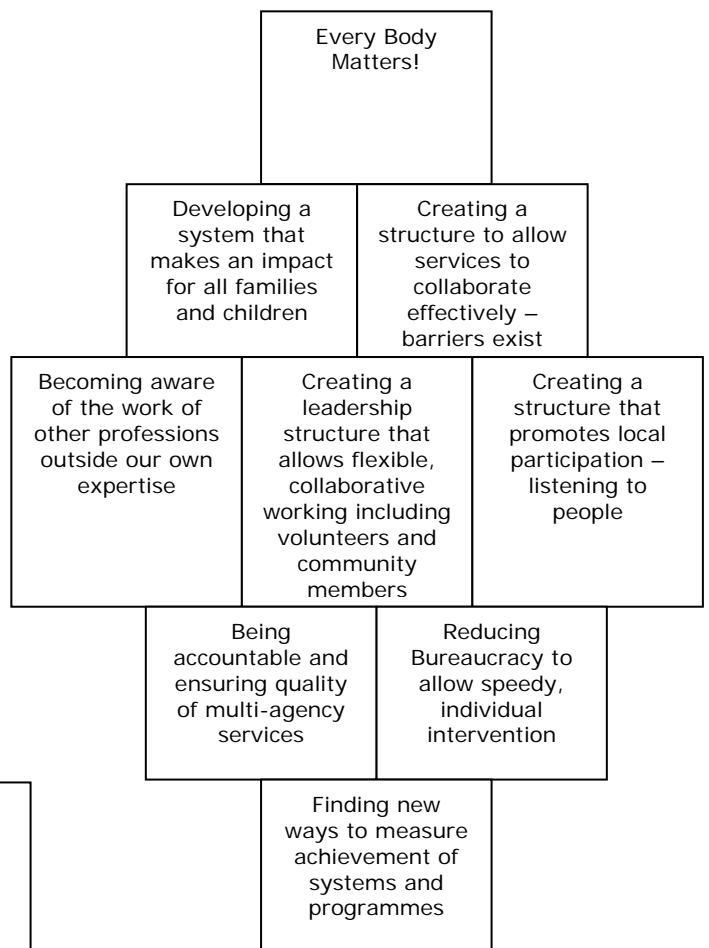
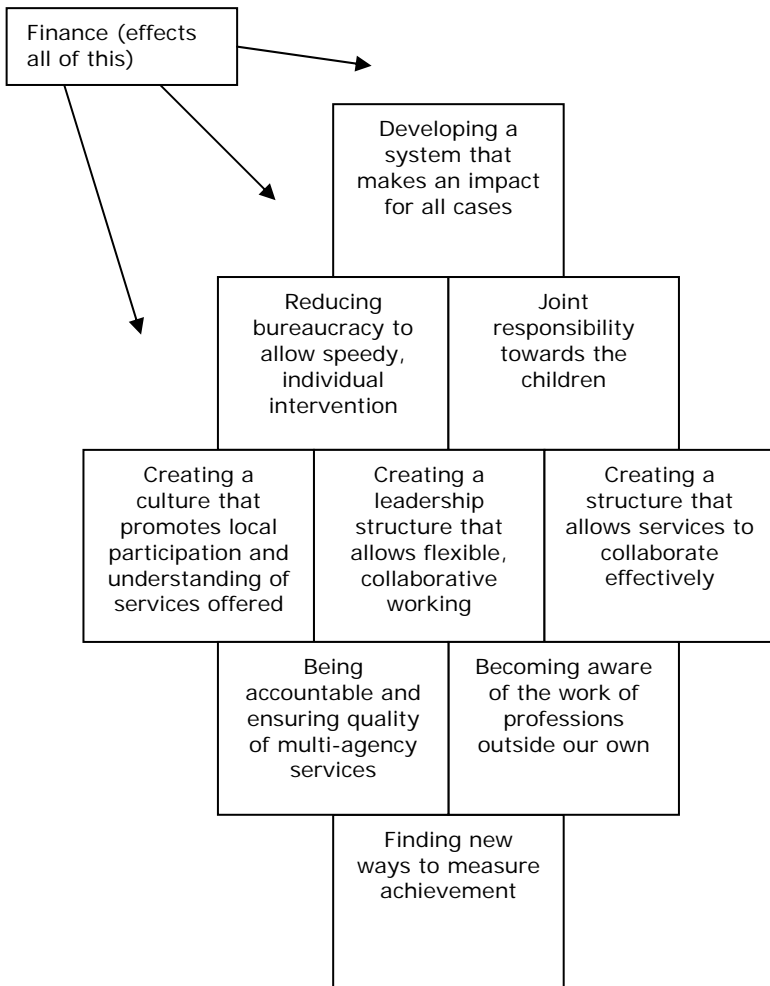
- Understanding, accepting and appreciating cultural differences
 - Understanding and Knowledge
 - Prejudice – Racial and religious
 - Red tape – not looking at the wider perspective
 - Communication and Listening
 - Time to be (in the present) valuing who they are and where they are
-
- Willingness to resolve conflict in a non-violent way
 - Understanding, accepting and appreciating cultural differences
 - Equipping children with the skills to survive in an ever-changing world
-
- Children have rights whichever country they are living in (regardless of immigration and asylum laws)
 - People have a basic right to food, shelter, water and safety
 - Stop the global child sex trade
 - If each child is registered from birth then they 'exist'
 - Importance of voting in local and national elections
 - A commitment by everyone to protect our world



Task 2 – National Perspectives ‘Diamond 9 Activity’

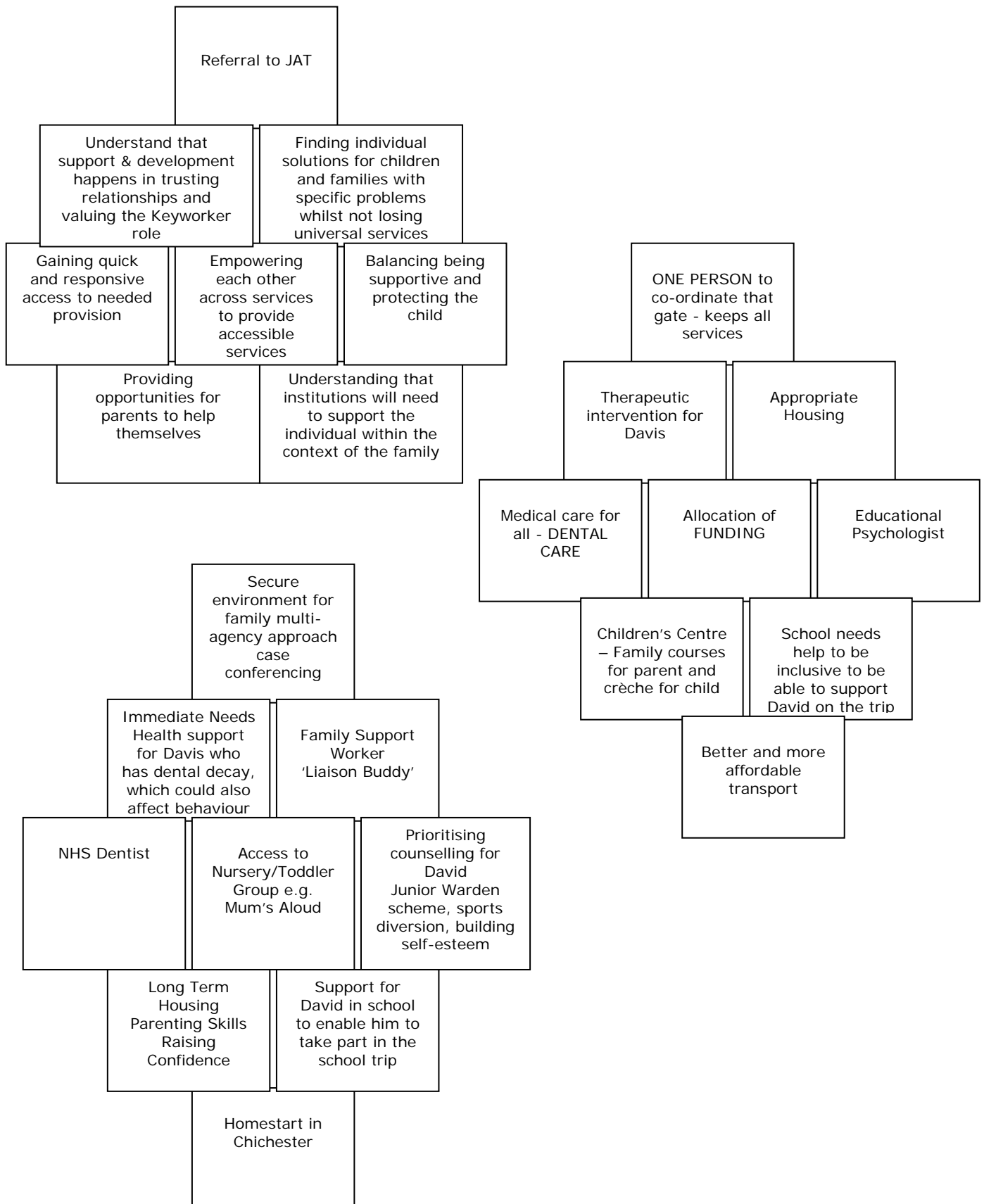
Groups were asked to think about how people’s needs can be met with national perspectives in mind.

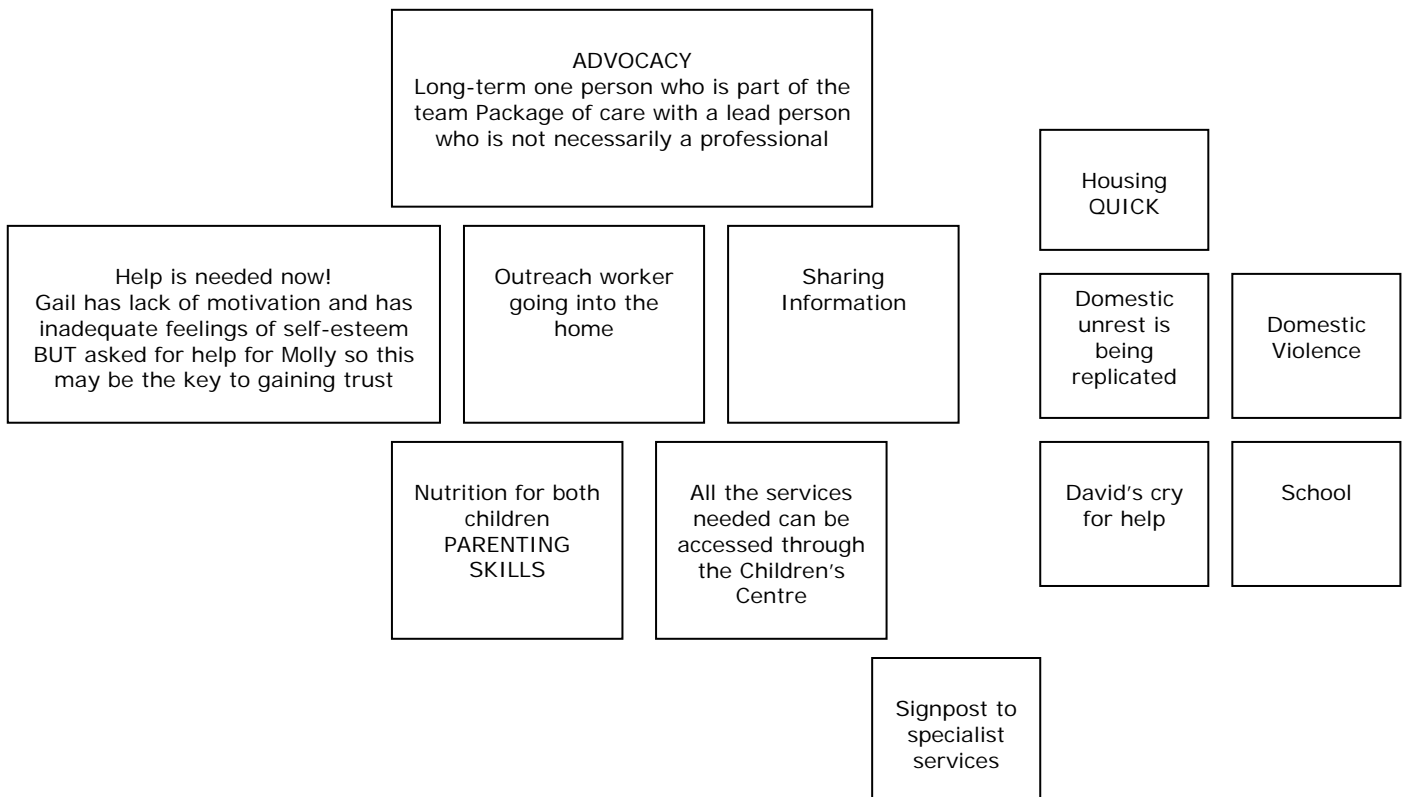
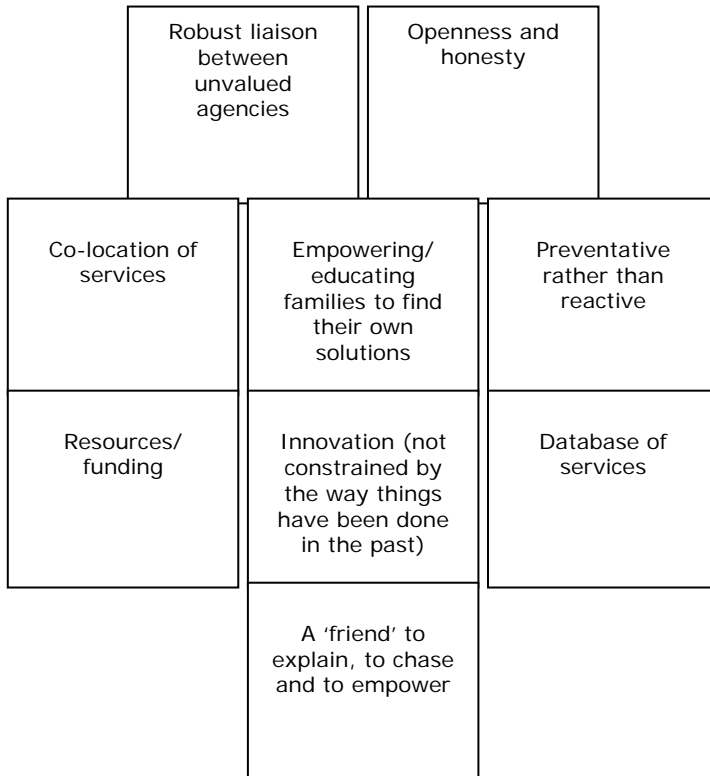




Task 3 – Local Case Study Diamond 9

From a case study given at the meeting (see attachment) groups were asked to discuss how the families' needs could be met.





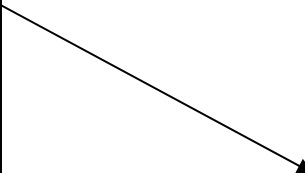
A link worker that carries you from birth to 16 – Volunteer Family Link Worker (or fairy Godmother).



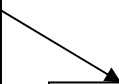
Somebody to help with her toddler in the home e.g. a Community Nursery Nurse.



The Nursery Nurse is the link to the Children's Centre who can then help mum with her literacy skills



Referral to Community Dental Clinic for oral health



The Children's Centre can offer a place for the toddler Molly